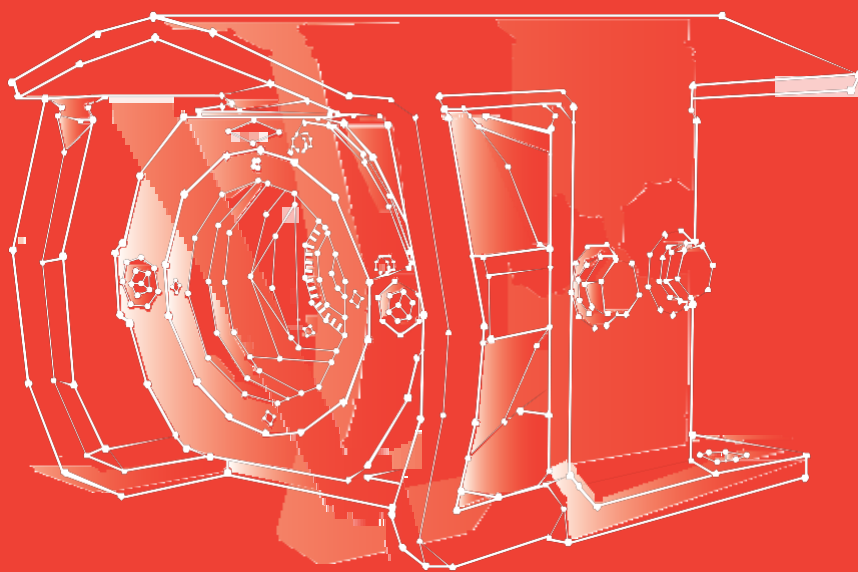

PRODUCT CATALOGUE



A·T·F

MINING ELECTRICS®

TABLE OF CONTENTS

Introduction	4
Series 170	5
Series 178	6
Series 251	7
Series 351	9
Series 363	11
Series 800	12
Series 810	13
Series 820	14
Series 850	15
Series 900	16
Series 950	17
Series 1000	18
Series 1100	20
Series 1150	22
Series 1200	23
Blanking Plates & Conversion Assemblies	25
Machine Oil Level & Temperature Switch	26
Phase Rotation Indicator	27
AF-E-Series	28
Service Exchange Enclosures	31
Overhauls	32

DISCLAIMER

While every effort has been made to assure the accuracy of this document at the date of issue, Ampcontrol assumes no liability resulting from any omissions or errors in this document, and reserves the right to revise content at any time





ATF Mining Electrics specialises in the design, manufacture and overhaul of mining electrical systems - nonhazardous and hazardous area as well as mining machinery electrical systems.

ATF has a strong commitment to work with machine manufacturers and end users to supply the highest quality fit for purpose electrics.

With over 35 years' experience our enclosures and components are made in Australia from high quality, durable components and are engineered to the highest quality standards, our products are certified to the IECEx standards for use in hazardous areas.

ENCLOSURE	Pump/Fan Starter	Fixed and Mobile Substations	Distribution Boards	Conveyor Systems	Motor Control Centres	Mobile Machinery	Continuous Miners	Shuttle Cars	Feeder Breakers	Control and Monitoring	Shearer Decoupler
170	✓	✓	✓	✓	✓	✓	✓	✓	✓		
178	✓					✓	✓	✓	✓		
251	✓		✓	✓	✓	✓	✓	✓	✓		
351	✓	✓	✓	✓	✓	✓	✓	✓	✓	✓	
363	✓	✓	✓	✓	✓	✓	✓	✓	✓	✓	
800	✓		✓	✓	✓	✓	✓		✓	✓	
810	✓	✓	✓	✓	✓	✓	✓	✓	✓	✓	✓
820	✓	✓	✓	✓	✓	✓	✓	✓	✓	✓	
850	✓		✓	✓	✓	✓	✓	✓	✓	✓	
900	✓	✓	✓	✓	✓	✓	✓	✓	✓		
950						✓	✓	✓	✓	✓	✓
1000	✓	✓	✓	✓	✓	✓	✓	✓	✓	✓	✓
1100	✓	✓	✓	✓	✓	✓	✓	✓	✓	✓	✓
1150	✓	✓	✓	✓	✓	✓	✓	✓	✓	✓	✓
1200	✓	✓	✓	✓	✓	✓	✓	✓	✓	✓	✓
Blanking plates	✓	✓	✓	✓	✓	✓	✓	✓	✓	✓	✓
Oil level & Temp	✓				✓	✓	✓	✓	✓		
Phase Rotation	✓	✓	✓	✓	✓	✓	✓	✓	✓	✓	
AF-E-2100	✓	✓	✓	✓	✓	✓	✓	✓	✓	✓	
AF-E-2200		✓	✓	✓	✓		✓			✓	
AF-E-2220	✓		✓	✓	✓	✓	✓	✓	✓	✓	
AF-E-2230		✓	✓	✓	✓					✓	
AF-E-2250		✓	✓	✓	✓					✓	
AF-E-2350	✓		✓	✓	✓	✓	✓	✓	✓	✓	
AF-E-2400		✓	✓	✓	✓		✓			✓	
AF-E-2440	✓		✓	✓	✓	✓	✓	✓	✓	✓	
AF-E-2450	✓		✓	✓	✓	✓	✓	✓	✓	✓	
AF-T-3100		✓									

SERIES 170 JUNCTION BOX



The Series 170 Junction Box can be used for various applications including but not limited to Diesel Machines, Motor Junction Boxes or Cable Reel Junction Boxes.

It is made from mild steel with a bolt on cover that can be fitted with a Viewing Window.

The Junction Box can be fitted with Selector Switch Operators, Pushbutton Operators, Pressure Switch, Flametrap and Gland Entries in the side walls.

There are various options available as a standard enclosure however other options are available under the IEC Certification.

Note: Blank Enclosures cannot be purchased. Entry details must be provided and quoted prior to sale, please contact ATF Sales for drawing number ATF1-170-06 for entry configuration.

SPECIFICATIONS

CERTIFICATION

Certificate Number	IEC Ex SIM 05.0008X
Type	Ex d I T6

GENERAL

Material	Mild Steel
Weight	18kg
Dimensions (HxWxD)	180 x 230 x125 mm
Ingress Protection	IP55

PART NUMBERS

108039	Series 170 Blank Enclosure
106994	Series 170 Option 1 fitted with 6 x M 20 Entries
107206	Series 170 Option 2 A2U913-792035
108040	Series 170 Option 3 Fitted with 8 x M 20 Entries, Hour Meter, Flame Trap/Pressure Switch & Relay
108541	Series 170 Option 4 Fitted with 4 x M 32 Entries
144349	Series 170 Option 5 Fitted with 4 x M 20 Entries and 2 x M 20 Entries on the opposite side
163008	Series 170 Option 6 Fitted with 8 x M20 Entries Spot faced at 52mm
163334	Series 170 Option 7 Fitted with 8 x M20 Entries, 6, 6 x 5 Pin FLP Sockets
165489	Series 170 Option 8 Fitted with 16 x M20 Entries
167396	Series 170 Option 9 Fitted with 8 x M20 Entries, Flame Trap/Pressure Switch & Relay
169634	Series 170 Option 10 Fitted with 4 x M20 Entries & tapped holes for mounting of din rail on one (1) side wall
159487	Series 170 Option 11 Fitted with 16 x M20 Entries

SERIES 178 JUNCTION BOX



The Series 178 Enclosure can be used for various applications including but not limited to Motor Junction Boxes, Motor Isolators and Cable Reel Junction Boxes.

It is made from cast high tensile bronze with a bolt on cover.

The enclosure can be fitted with Switch Operators, Pushbutton Operators, Restrained Receptacle, Windows and Gland Entries in the side walls.

The enclosure can be fitted with various components available under the IEC Certification. The enclosure is stocked as blank and will be drilled to the customer specification and according to certification requirements.

Note: Blank Enclosures cannot be purchased. Entry details must be provided and quoted prior to sale, please contact ATF Sales for drawing number ATF1-178-06 for entry configuration.

SPECIFICATIONS

CERTIFICATION

Certificate Number	IEC Ex SIM 05.0005X
Type	Ex d I

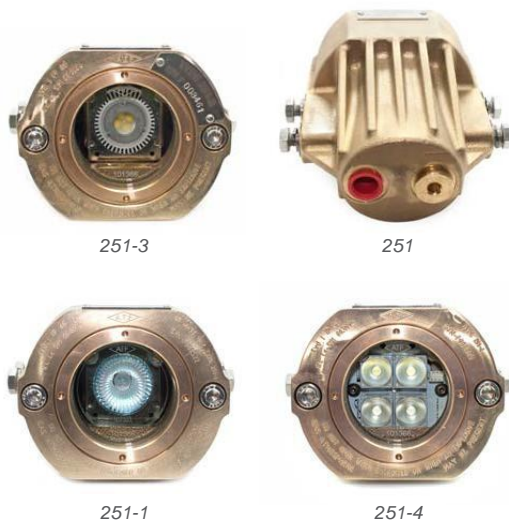
GENERAL

Material	High Tensile Bronze
Weight	35kg
Dimensions (HxWxD)	225 x 355 x150 mm
Ingress Protection	IP55

PART NUMBERS

109625	Series 178 Blank Enclosure
167670	Series 178 Enclosure Option 1 Fitted with 4 x M 20 entries on each short side with 5 x M 20 plugs
171997	Series 178 Enclosure Option 2 Fitted with 12 x M20 entries on each short side
179924	Series 178 Enclosure Option 3 Fitted with 12 x M20 entries on one short side and 7 x M20 entries on the other short side

SERIES 251 FLAMEPROOF HEADLIGHTS



The ATF Mining Electrics type 251 Flameproof Headlight is manufactured from high tensile bronze.

The enclosure can be fitted with various components available under the IEC Certification. The Headlight is suitable for use on all Electric Mining Machinery.

Series 251-1, the cover is fitted with a standard glass lens and configured with either of the following components – Lampholder complete with 2 x Red LED's and either a 35W or 20W Globe, Indication Lamps, 35W Lamp Assembly (or 20W globe if requested) or a CCD Camera.

Series 251-2, the cover is fitted with a Germanium Lens. The internal option is for an IR Camera.

Series 251-3, the cover is fitted with a standard lens and is fitted with a MR16 LED Lamp Assembly complete with 2 red LED's.

Series 251-4, the cover is fitted with a standard lens with a custom LED cluster of four 3W LEDs and 1 red LED.

The ATF Mining Electrics type 251 Guard is suitable for use with the ATF Headlight. The Guard is manufactured from 5mm zinc plated mild steel with a stainless steel mesh guard. The headlight can be supplied with either guard fitted

SPECIFICATIONS

CERTIFICATION

Certificate Number	IEC Ex SIM 06.0004
Type	Ex d I

GENERAL

Material	High Tensile Bronze
Weight	7kg
Dimensions (HxWxD)	110 x 135 x 160 mm
Ingress Protection	IP66



HEADLIGHT PART NUMBERS & SPARES

108058	Series 251-1: 35W white globe & 2 red indicator LED's
107112	Series 251-1: 20W white globe & 2 red indicator LED's
141761	Series 251-2
157500	Series 251-3: 10W LED white & 2 x red indicator LED's
157501	Series 251-4: 10W LED & 2 red indicator LED's
101404	Series 251 – LB1 Guard (standard guard)
106145	Series 251 – LB2 Guard (LB1 with front guard)
101405	Series 251 – LB3 Guard (LB1 bracket without lid)
101364	Series 251 – Mesh guard folded (Stainless steel)
140045	Series 251 – Mesh Guard flat (Stainless steel)
107110	Globe 35W (251-1)
107108	Globe 20W (251-1)
179342	Globe LED 10W (251-3)
142457	Custom LED Cluster (251-4)
101403	Lamp Holder & 2 red LED's (251-1)
177611	Lamp Holder & 2 red LED's (251-3)

SERIES 351_{ENCLOSURE}



The Series 351 Enclosure is suitable for use on all Electric Mining Machinery and fixed locations where a small enclosure is required.

The enclosure is manufactured from high tensile bronze.

The enclosure can be fitted with various components available under the IEC Certification. The options are Switch, Pushbutton, Window or Junction Box.

One of the more common items that utilize the Series 351 Emergency Stop Enclosure is the Flameproof Lanyard Switch. It is suitable for use in Hazardous locations on Stationary or Mobile Machines and is fitted with additional Mounting Brackets and Operators.

The parts are available as separate items or as an Assembly. Refer to the Series 351 enclosure for spares.

Note: Other voltages for the Hour Run Meter are available upon request.

SPECIFICATIONS

CERTIFICATION

Certificate Number	IEC Ex SIM 05.0007X
Type	Ex d I

GENERAL

Material	High Tensile Bronze
Weight	6kg
Dimensions (HxWxD)	130 x 130 x 130 mm
Ingress Protection	IP66

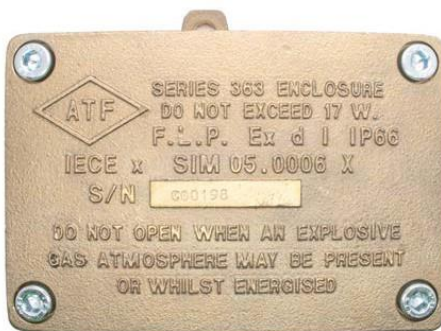


Lanyard Switch

351 SERIES PART NUMBERS & SPARES

108050	Series 351 Switch: Complete with dual pole on/off switch 3 Blanking Plugs
108046	Series 351 Pushbutton: Tall Base with Latching Operator and 3 Blanking Plugs
108047	Series 351 Pushbutton: Short Base with Latching Operator and 3 Blanking Plugs (Can be used as an Emergency Stop)
108041	Series 351 Window Enclosure: with Hour Run Meter (12V) fitted and 3 Blanking Plugs
108049	Series 351 Window Enclosure: with Blue/Red Strobe fitted and 3 Blanking Plugs
106318	Series 351 Window Enclosure: with Amber/Green Strobe fitted and 3 Blanking Plugs
108044	Series 351 Junction Box: fitted with 3 Blanking Plugs
111026	Series 351 Junction Box: fitted with 2m of Dusky Light Tube and 2 Blanking Plugs
141884	Blue/Red Strobe Assembly
141883	Amber/Green Strobe Assembly
108167	Standard K & N Switch
108042	Complete with Window
163174	Junction Box with Short Base + 3 Plugs
166339	Push Button latching with safety contacts
107644	Series 351 Flameproof Lanyard Switch complete Assembly
106614	Lanyard Bracket

SERIES 363 ENCLOSURE



The 363 Junction Box is a Multipurpose Junction Box suitable for use in Hazardous areas or where Flameproof Equipment is required. The enclosure can be fitted with various components available under the IEC Certification. Options include Terminal Blocks, Fuses, Control Relays or Cable Termination Junction Boxes. Cable Entries are provided through the side walls of the base.

The 363 Series Enclosures are made from High Tensile Bronze.

Note: Blank Enclosures cannot be purchased. Entry details must be provided and quoted prior to sale, please contact ATF Sales for drawing number ATF1-363-05 for entry configuration.

SPECIFICATIONS

CERTIFICATION

Certificate Number	IEC Ex SIM 05.0006X
Type	Ex d I

GENERAL

Material	High Tensile Bronze
Weight	5kg (without glands)
Dimensions (HxWxD)	100 x 150 x 75 mm
Ingress Protection	IP66

PART NUMBERS

107225	Series 363 Junction Box
--------	-------------------------

SERIES 800 ENCLOSURE



The 800 Series Enclosures is a Multipurpose Enclosure suitable for use in Hazardous areas or where Flameproof Equipment is required. The enclosure can be fitted with various components available under the IEC Certification.

The enclosures are made from welded mild steel plate construction and comprises of two compartments. The enclosure can be manufactured vertically or horizontally.

The Main Compartment has a hinged and bolted door which may be fitted with up to 30 Threaded Entries for fitting of separately certified Operators or Components. The door can also be fitted with a single Window.

The Isolator Compartment has a bolted cover. The Isolator Chamber may include provision to remove power from the Main Compartment. The front of the Isolator Compartment may be fitted with up to 9 threaded entries for fitting of separately certified Operators or Components

The side walls include pads to allow the fitting of separately certified Operators or Components including Receptacles and Adaptors.

Note: This Enclosure is custom built, to discuss available options please contact our sales team.

SPECIFICATIONS

CERTIFICATION

Certificate Number	IEC Ex SIM 08.0003X
Type	Ex d I

GENERAL

Material	Mild Steel
Weight	As per construction
Dimensions (HxWxD)	970 x 480 x 360 mm (not including attachments)
Ingress Protection	IP66

PART NUMBERS

108055	Series 800 Enclosure
--------	----------------------

SERIES 810 WINDOW



The 810 Series Window is fitted with a M63 Male Thread for fitting to certified enclosures suitable for use in Hazardous areas or where Flameproof Equipment is required, under the IEC Certification.

The Window is made from Stainless Steel and is fitted with an armoured glass lens.

SPECIFICATIONS

CERTIFICATION

Certificate Number	IEC Ex SIM 08.0004U
Type	Ex d I

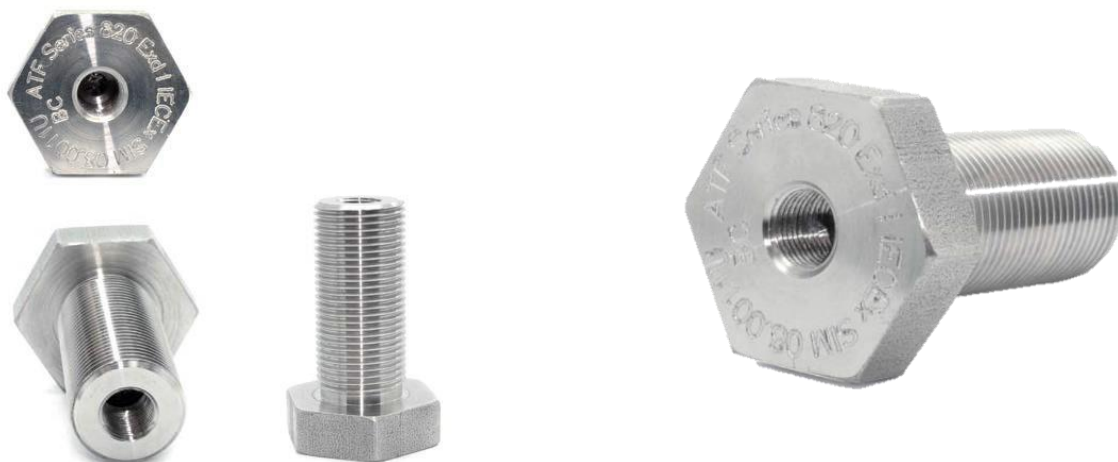
GENERAL

Material	Grade 303 Stainless Steel
Weight	1kg
Dimensions (HxWxD)	80 mm across hex
Ingress Protection	IP65

PART NUMBERS

140186	Series 810 Window
--------	-------------------

SERIES 820 FLAMETRAP



The 820 Series Flametrapp has a M20 Male Thread intended for fitting to certified enclosures suitable for use in Hazardous areas or where Flameproof Equipment is required, under the IEC Certification. Internal Thread has been tapped at 1/8" BSPT on 1/8" NPT for the fitting of airlines.

The Flametrapp is made from Stainless Steel.

SPECIFICATIONS

CERTIFICATION

Certificate Number	IEC Ex SIM 08.00011U
Type	Ex d I

GENERAL

Material	Grade 304 Stainless Steel
Weight	1kg
Dimensions (HxWxD)	32 mm across hex
Ingress Protection	IP65

PART NUMBERS

140282	Series 820 Flametrapp
--------	-----------------------

SERIES 850 ENCLOSURE



The 850 Series Enclosures is a Multipurpose Enclosure suitable for use in Hazardous areas or where Flameproof Equipment is required. The enclosure can be fitted with various components available under the IEC Certification.

The enclosures are made from welded mild steel plate construction and comprises of two compartments. The enclosure can be manufactured vertically or horizontally.

The Main Compartment has a hinged and bolted door which may be fitted with Threaded Entries for fitting off separately certified Operators or Components. The door can also be fitted with a single Window.

The Isolator Compartment has a hinged and bolted door. The Isolator Chamber may contain a disconnecter to remove power from the Main Compartment. The front of the Isolator Compartment may be fitted with Entries for fitting of separately certified Operators or Components.

The side walls can be configured to allow the fitting of separately certified Operators or Components including Receptacles and Adaptors.

The rear wall can be configured to allow for the fitting of Spigot Entries.

Note: This Enclosure is custom built, to discuss available options please contact our sales team.

SPECIFICATIONS

CERTIFICATION

Certificate Number	IEC Ex SIM 10.0010X
Type	Ex d I

GENERAL

Material	Mild Steel
Weight	As per construction
Dimensions (HxWxD)	630 x 1250 x 500 mm
Ingress Protection	IP65

PART NUMBERS

161967	Series 850 Enclosure
--------	----------------------

SERIES 900 ENCLOSURE



The 900 Series Junction Box is a Multipurpose Junction Box suitable for use in Hazardous areas or where Flameproof Equipment is required. The enclosure can be fitted with various components available under the IEC Certification.

The enclosures are made from mild steel and comprises of a base and one of three options for the bolted cover.

Cable Entries are provided through the side walls of the base, up to two M25 Threaded Entries in each side wall and up to two M20 Entries in each end wall.

Option1: Cover does not have any entry provision.

Option 2: Cover may have one threaded entry for the fitting of a Window (S810) or a separately certified device.

Option 3: Cover may have up to four Threaded Entries for the fitting of Flametraps or separately certified devices.

Note: Blank Enclosures cannot be purchased. Entry details must be provided and quoted prior to sale, please contact ATF Sales for drawing number ATF1-900-22 for entry configuration.

SPECIFICATIONS

CERTIFICATION

Certificate Number	IEC Ex SIM 08.0013X
Type	Ex d I

GENERAL

Material	Mild Steel
Weight	7kg
Dimensions (HxWxD)	130 x 150 x 80 mm (standard) 130 x 150 x 110 mm (raised)
Ingress Protection	IP65

PART NUMBERS

140259	Series 900 Enclosure
140257	Series 900 Junction Box Cover Option 1, no entries in cover (standard)
180216	Series 900 Junction Box Cover Option 2, 1 entry for fitting of Window (made to order)
180217	Series 900 Junction Box Cover Option 3, fitted with up to 4 entries for the fitting of Flametraps (made to order)
141734	Series 900 Diesel Junction Box fitted with Flametrap, pressure switch, 12VDC relay + Blanking Plugs
144615	Series 900 Junction Box fitted with Pressure Switches, Flame Traps and entries.
173862	Series 900 Junction Box fitted with 5m of lighting polytube cut to length

SERIES 950 ENCLOSURE



The 950 Series Enclosure is a Multipurpose Enclosure suitable for use in Hazardous areas or where Flameproof Equipment is required. The enclosure can be fitted with various components available under the IEC Certification.

The enclosure is made from Mild Steel and comprises of a base and one of three options for the bolted cover.

The enclosure can be orientated to suit requirements; with the door having the capacity to be hinged on any of the four sides. The enclosure is intended to accommodate various Cable Coupling Devices, Threaded Plain Entries, Viewing Windows and Operators as required and can be used for used such as Shearer Decoupler Junction Boxes, Isolators and Control Enclosures etc.

Note: This Enclosure is custom built, to discuss available options please contact our sales team.

SPECIFICATIONS

CERTIFICATION

Certificate Number	IEC Ex SIM 9.0004X
Type	Ex d I

GENERAL

Material	Mild Steel
Weight	50kg (empty enclosure only)
Dimensions (HxWxD)	420 x 500 x 290 mm
Ingress Protection	IP65

PART NUMBERS

159486	Series 950 Enclosure
173717	Series 950 Enclosure, Shearer De Coupler Enclosure (3.3kV – 300A)

SERIES 1000 PUSH BUTTONS AND OPERATORS



The 1000 series Pushbutton and Switch Operators consist of 12mm and 16mm Nominal Shaft. The Operators can be used in plain holes or fitted with a Threaded Bush that has IEC certification.

The parts are available as separate items or as an Assembly.

SPECIFICATIONS

CERTIFICATION	
Certificate Number	IEC Ex SIM 9.0003U
Type	Ex d I
GENERAL	
Material	12 mm: Brass Alloy or Grade 303 or 316 Stainless Steel 16 mm Operators: Mild Steel or Grade 303 or 316 Stainless Steel 16mm Bushes: Brass Alloy or Grade 303 or 316 Stainless Steel
Weight	1kg
Dimensions (HxWxD)	12mm x 16mm nominal shaft
Ingress Protection	IP65



Lock Attachment



Shrouded Pushbutton



Emergency Stop



Switch



Polycarbonate Pad Lockable 60mm Cover



Operator Lock Mechanism

SPECIFICATIONS

144165	Shrouded Push Button Assembly
158672	Switch Assembly M25 x 25 x 12 mm
144164	Switch Assembly M25 x 20 x 12 mm
193388	Switch Assembly w/Round Operator
300086	E-Stop for 50mm Flange
160737	E-Stop Standard Flange
143249	Lock in attachment
143250	Lock Out Attachment
199812	Operator Lock Mechanism
301921	Polycarbonate Pad Lockable 60mm Cover

SERIES 1100 SPIGOT ADAPTORS



The 1100 Series Spigot Adaptors have a range of diameters intended for fitting to certified enclosures suitable for use in Hazardous areas or where Flameproof Equipment is required, under the IEC Certification.

The Spigot Adaptors are made from either Mild Steel or Stainless Steel and have an option of being electroplated.

The Spigot Adaptors have a range of Internal Metric Threads or may be manufactured with no entries to be used as Blanking Elements. An O-Ring in the Spigot provides a degree of protection of IP66.

SPECIFICATIONS

CERTIFICATION

Certificate Number	IEC Ex SIM 10.0008U
Type	Ex d I

GENERAL

Material	Mild Steel or Grade 303 or 316 Stainless Steel
Weight	1kg
Dimensions (HxWxD)	12mm x 16mm nominal shaft
Ingress Protection	IP65

SPECIFICATIONS

144394	Reducer Spigot 40/20 mm
144395	Reducer Spigot 40/20 mm Stainless Steel
144396	Reducer Spigot 40/25 mm
144397	Reducer Spigot 40/25 mm Stainless Steel
144398	Reducer Spigot 60/20 mm
144399	Reducer Spigot 60/20 mm Stainless Steel
144400	Reducer Spigot 60/25 mm
144401	Reducer Spigot 60/25 mm Stainless Steel
144402	Reducer Spigot 60/32 mm
144403	Reducer Spigot 60/32 mm Stainless Steel
144404	Reducer Spigot 60/40 mm
144405	Reducer Spigot 60/40 mm Stainless Steel
144406	Reducer Spigot 80/20 mm
144407	Reducer Spigot 80/20 mm Stainless Steel
144408	Reducer Spigot 80/25 mm
144409	Reducer Spigot 80/25 mm Stainless Steel
144410	Reducer Spigot 80/32 mm
144411	Reducer Spigot 80/32 mm Stainless Steel
144412	Reducer Spigot 80/40 mm
144413	Reducer Spigot 80/40 mm Stainless Steel
144414	Reducer Spigot 80/50 mm
144415	Reducer Spigot 80/50 mm Stainless Steel
144416	Reducer Spigot 80/63 mm
144417	Reducer Spigot 80/63 mm Stainless Steel
144418	Spigot 40 mm Blank
144419	Spigot 40 mm Blank Stainless Steel
144420	Spigot 60 mm Blank
144421	Spigot 60 mm Blank Stainless Steel
144422	Spigot 80 mm Blank
144423	Spigot 80 mm Blank Stainless Steel
144470	Keeper Plate 40 mm
144471	Keeper Plate 60 mm
144472	Keeper Plate 80 mm

SERIES 1150 RIGHT ANGLE ADAPTORS



The 1150 Series Elbow Adaptors have a size range of M20, M20 Long, M25, M32, M40, M50 and M63 intended for fitting to certified enclosures suitable for use in Hazardous areas or where Flameproof Equipment is required, under the IEC Certification.

The Elbow Adaptors have a range of Internal Metric Threads for the fitting of separately certified devices.

The 1150 Series Elbow Adaptors are made from Mild Steel or Stainless Steel and have an option of being electroplated.

SPECIFICATIONS

CERTIFICATION

Certificate Number	IEC Ex SIM 10.0009U
Type	Ex d I

GENERAL

Material	Mild Steel or Grade 303 316 Stainless Steel
Weight	1kg
Dimensions (HxWxD)	
Ingress Protection	IP66

PART NUMBERS

144333	Elbow M20
144334	Elbow M20 L (longer male thread)
144335	Elbow M25
144336	Elbow M32
144337	Elbow M40
144338	Elbow M50
144339	Elbow M63

SERIES 1200 BLANKING PLUGS, REDUCERS AND CONVERSIONS



The 1200 series is a large range of Flameproof Plugs and Adaptors (Reducers/Step Up) that are available to close unused openings in Explosion Protected Enclosures or to change Threaded Entries.

The Plugs and Adaptors range from M20 to M130 as well as 2½" and 3" BSP.

SPECIFICATIONS

CERTIFICATION

Certificate Number	IEC Ex TSA 10.0014
Type	Ex d I

GENERAL

Material	Brass Alloy
Weight	1kg
Dimensions (HxWxD)	110 x 135 x 160 mm
Ingress Protection	IP66

SPECIFICATIONS

143963	Metric Plug 20 mm
143964	Metric Plug 25 mm
143965	Metric Plug 28 mm
143966	Metric Plug 32 mm
143968	Metric Plug 40 mm
143969	Metric Plug 50 mm
143970	Metric Plug 63 mm
143923	Flameproof Reducer 25/20
143924	Flameproof Reducer 28/20
143926	Flameproof Reducer 32/20
143927	Flameproof Reducer 32/25
143929	Flameproof Reducer 40/20
143930	Flameproof Reducer 40/25
143931	Flameproof Reducer 40/32
143932	Flameproof Reducer 50/20
143933	Flameproof Reducer 50/25
143934	Flameproof Reducer 50/32
143935	Flameproof Reducer 50/40
143936	Flameproof Reducer 63/20
143937	Flameproof Reducer 63/25
143938	Flameproof Reducer 63/32
143939	Flameproof Reducer 63/40
143940	Flameproof Reducer 63/50
143949	Adaptor 20/25 Step Up
	Adaptor 20/28 Step Up
143950	Adaptor 25/32 Step Up
143951	Adaptor 32/40 Step Up
143952	Adaptor 40/50 Step Up
143953	Adaptor 50/63 Step Up

BLANKING PLATES AND CONVERSION ASSEMBLIES



A range of Flameproof Blanking Plates and Conversion Assemblies are available to close unused openings in Explosion Protected Enclosures or to change Connector type or size.

The Blanking Plates can be supplied with Threaded or Spigot Entries. The Conversion Assemblies can be configured to be either straight or up to 90° with any option of the Blanking Plates.

SPECIFICATIONS

CERTIFICATION

Certificate Number	IEC Ex TSA 07.0043U
Type	Ex d I

GENERAL

Material	Mild Steel or Stainless Steel
Weight	Depends on Options
Dimensions (HxWxD)	Depends on Options
Ingress Protection	IP65

PART NUMBERS

161246	60A Receptacle
140380	150A receptacle
140381	300/425A Receptacle
142454	300/425A Adapter (1.1kV)
162196	425R – 425R Conversion Assembly 90°
162197	425R – 350V Conversion Assembly 90°
162198	425R – 150R Conversion Assembly 90°
162199	425R – 350V Conversion Assembly
162200	150R – 425A Conversion Assembly
162201	425R – 150R Conversion Assembly
162202	150R – 150R Conversion Assembly 90°
162203	150R – 425A Conversion Assembly 90°
162204	425R – 425A Conversion Assembly
162205	425R – 425A Conversion Assembly 90°
168851	425R – 425R Conversion Assembly

R – Receptacle; A – Adaptor; V- Victor

MACHINE OIL LEVEL AND TEMPERATURE SWITCH



General Purpose Float Switch for use on all Machines in conjunction with IS Relays for the protection of Low Oil and Oil Temperature.

The Level Switches can be setup at varying heights to allow for customised applications.

The Oil Temperature can be detected via Temperature Switches or via RTD.

SPECIFICATIONS

CERTIFICATION

Certificate Number	NA
--------------------	----

GENERAL

Material	Stainless Steel
Weight	2kg
Dimensions (HxWxD)	Various
Ingress Protection	IP56

PART NUMBERS

Various	Product made to order. Contact ATF Sales for details
---------	--

PHASE ROTATION INDICATOR



Phase Rotation Indicators are typically used to indicate 1000 Volts and each phase healthy. It will also indicate if the phasing has been reversed. If a phase is not healthy then that phase only will be lit up. The units come as standard with 1m of Silicon Cable and has internal Fuses for protection.

Optional Mounting Bracket can also be supplied for panel mounting or can be fitted to our 810 window.

SPECIFICATIONS

CERTIFICATION

Certificate Number	NA
Type	1000V

GENERAL

Material	NA
Weight	1kg
Dimensions (HxWxD)	60 x 60 x 80 mm

PART NUMBERS

101798	Phase Rotation Indicator
163320	Fuse Holder for line side protection
163319	4A Fuse for Fuse Holder
160738	Mounting Bracket

AF-E-SERIES ENCLOSURES



AF-E-2200 3.3kV Longwall Distribution Control Box

The following is an indication of our larger Enclosures. The certification for this series of enclosures allows the assembly to be configured in various combinations to suit specific applications. For example, if two PLC Compartments are required then an additional section can be added as per its certification.

These enclosures are custom built, to discuss available options please contact our sales team.

SPECIFICATIONS

CERTIFICATION

Certificate Number	Various
Type	Ex d or Ex d e or Ex d [ia, ib] ia ib

GENERAL

Material	Mild Steel
Weight	Dependant on construction
Dimensions (HxWxD)	Dependant on construction
Ingress Protection	IP66 with 'O' ring IP54 without 'O' ring



SPECIFICATIONS

Description	AF-E-2203 & AF-E-2230 Multi Outlet Load Centre IEC Ex TSA 09.0042X
Type of Protection	Ex d I IP## IP66 with 'O' Ring IP54 without 'O' Ring



SPECIFICATIONS

Description	AF-E-2220 Enclosure IEC Ex TSA 09.0038X
Type of Protection	Ex d I 150°C IP## IP66 with 'O' Ring IP44 with 'O' Ring



SPECIFICATIONS

Description	AF-E-2250 & AF-E-2290 Control & Monitoring Enclosure IEC Ex TSA 09.0042X
Type of Protection	Ex d I IP## IP66 with 'O' Ring IP54 without 'O' Ring



SPECIFICATIONS

Description	AF-E-2350 Control & Monitoring Enclosure IEC Ex TSA 09.0049X
Type of Protection	Ex d I IP54



SPECIFICATIONS

Description	AF-E-2400 Low Height LW DCB Enclosure IEC Ex TSA 09.0048X
Type of Protection	Ed I 150°C IP66 (when fitted with 'O' Ring)



SPECIFICATIONS

Description	AF-E2440 Enclosure IEC Ex TSA 09.0047X
Type of Protection	Ex d I IP## IP66 with 'O' Ring IP44 without 'O' Ring



SPECIFICATION

Description	AF-E-2450 Low Height LW CMU Enclosure IEC Ex TSA 09.0048X
Type of Protection	Ex d I 150° IP66 (when fitted with 'O' Ring)



SPECIFICATIONS

Description	Substation AP-T-3100 Transformer & AF-E-2200 Enclosures IEC Ex TSA 11.0009X IEC Ex TSA 09.0042X
Type of Protection	Ex d ia px I 145°C IP66 with 'O' Ring IP54 without 'O' Ring

SERVICE EXCHANGE ENCLOSURES

Ampcontrol have a large range of Enclosures in stock for Service Exchange, below is an example of what we can offer.

Please contact ATF Sales for availability, costs and quantities available for your specific needs.

Note: If the description does not contain IEC Ex then the certification for that item is not IEC Ex certified, however we will hold certification under another scheme.

SERVICE EXCHANGE	
PART NUMBERS	
110086	Service Exchange S363 Junction Box IEC Ex
111931	Service Exchange S351 Junction Box
111932	Service Exchange S351 Hour Run
111933	Service Exchange S351 Emergency Stop
119134	Service Exchange S351 Switch
111935	Service Exchange S351 Strobe
111936	Service Exchange S363 Junction Box
111937	Service Exchange Headlight IEC Ex
111938	Service Exchange S351 Junction Box IEC Ex
111939	Service Exchange S351 Hour Run IEC Ex
111940	Service Exchange S351 Emergency Stop IEC EX
111941	Service Exchange S351 Switch IEC Ex
111942	Service Exchange S351 Strobe IEC Ex
141039	Service Exchange S170 Junction Box SMV IEC Ex
141041	Service Exchange Setco Headlight
141042	Service Exchange PJB Headlight
141044	Service Exchange Vale Emergency Stop
141045	Service Exchange Joy Emergency Stop
142080	Service Exchange S198 Junction Box

Ampcontrol SWG

6-10 Martin Drive,
Tomago NSW 2322
Phone: +61 2 4961 9000
customerservice@ampcontrolgroup.com

ampcontrolgroup.com