

---

# DONGLE PROGRAMMER

## 180490

### User Manual

---

Version: 1, April 2024

Designed and manufactured in Australia by Ampcontrol Pty Ltd



**WARNING!**



The **warning** symbol highlights a potential risk of **injury or death**.  
Please share these warnings with other operators.

**CAUTION!**



The **caution** symbol highlights a potential risk of **damage to equipment**.  
Please share these cautions with other operators.

**NOTE**



The **note** symbol highlights **key information**.  
Please share these notes with other operators.

**ENVIRO**



The **enviro** (environmental) symbol highlights areas which may have an impact on the surrounding **fauna and/or flora**.

## Copyright Notice

The equipment described in this document is the property of AMPCONTROL PTY LTD. It is furnished under a license agreement and is to be used only in accordance with the terms of the agreement.

No part of the hardware or documentation may be reproduced, transmitted, transcribed, stored in a retrieval system, or translated into any language or computer language, in any form or by any means, without prior written permission of AMPCONTROL PTY LTD.

---

## Disclaimer

While every effort has been made to assure the accuracy and clarity of this document, AMPCONTROL PTY LTD assumes no liability resulting from any omissions in this document, or from misuse of the information obtained herein. The information in this document has been carefully checked and is believed to be entirely reliable with all of the necessary information included. AMPCONTROL PTY LTD reserves the right to make changes to any products described herein to improve reliability, function, or design, and reserves the right to revise this document and make changes from time to time in content hereof with no obligation to notify any persons of revisions or changes. AMPCONTROL PTY LTD does not assume any liability arising out of the application or any use of any product or circuit described herein; neither does it convey license under its patent rights or the rights of others.

---

## Before You Begin

Thank you for purchasing the Ampcontrol Dongle Programmer.

### WARNING!



In the interests of **safety and correct equipment operation**, please take the time to read and understand the content in this manual.

---

## Ampcontrol Contact Details

7 Billbrooke Close, Cameron Park, NSW, 2285

P +61 1300 267 373 | F +61 2 4903 4888

EMAIL: [customerservice@ampcontrolgroup.com](mailto:customerservice@ampcontrolgroup.com)

WEB: [ampcontrolgroup.com](http://ampcontrolgroup.com)

## TABLE OF CONTENTS

1 VERSION HISTORY .....	4
Software Version History .....	4
2 SAFETY AND OTHER WARNINGS.....	5
2.1 Safe Use of Equipment.....	5
2.2 Supplementary Documentation.....	5
2.3 Requirements for Safe Operation .....	5
3 RECEIVING AND STORAGE .....	6
3.1 Receiving .....	6
3.2 Inspection .....	6
3.3 Storage after Delivery.....	6
3.4 Unpacking of Equipment.....	6
4 PRODUCT DESCRIPTION.....	7
4.1 Overview .....	7
4.2 Key Features .....	7
5 SOFTWARE .....	8
5.1 Home Page Overview.....	8
5.2 Setting Options.....	9
5.3 Disposal .....	10
6 EQUIPMENT LIST .....	10

## TABLE OF FIGURES

Figure 1: Dongle Programmer (180490) .....	7
Figure 2: Dongle Blank (179345).....	7

## 1 VERSION HISTORY

### Software Version History

Version	Release Date	Changes
V1	April 2024	FW at Release

## 2 SAFETY AND OTHER WARNINGS

---

*For safety reasons, the dongle programmer must be operated by competent personnel. Please read and understand this instruction manual completely before operating this equipment. Failure to program a dongle correctly may result in product operational issues with equipment using the programmed dongle.*

### 2.1 Safe Use of Equipment

The equipment supplied has been designed and manufactured to ensure safe operation. The equipment must only be used within the design parameters.

The instructions within this manual must be observed as an aid towards achieving the safest possible installation.

**Persons responsible for installation, maintenance, or operation, must observe the following instructions:**

#### 2.1.1 Intended Use of Equipment

The dongle programmer is intended to be used to pre-configure setting dongles used within Ampcontrol equipment. Incorrect operation may result in incorrect setting configurations or incorrect settings being selected.

#### 2.1.2 Changes to Equipment

Changes in the design and modifications to the equipment are not permitted. Unauthorised changes made to the hardware or operating firmware will void the manufacturer's warranty and may compromise the functionality of the equipment and equipment the dongle is to be installed.

#### 2.1.3 Equipment Knowledge

Experience with, or understanding of, this equipment is essential for the safe operation. Therefore, please read and understand this manual prior to use. Competency based training courses are recommended and are available on request.

### 2.2 Supplementary Documentation

The dongle programmer should be read in conjunction with the associated product manual that the dongle is to be installed.

### 2.3 Requirements for Safe Operation

- All settings must be implemented in accordance with the applicable fault and touch potential control studies. The user is responsible for implementing a change management strategy for any deviations
- All requirements for safe operation should be integrated into the user's own work procedures
- The equipment must be installed, operated and serviced only by authorised and competent personnel
- The equipment is not designed for use in explosive atmospheres
- Do not operate equipment outside of their electrical or mechanical ratings

## 3 RECEIVING AND STORAGE

### 3.1 Receiving

All possible precautions are taken to protect the equipment against damage during shipment; however, before accepting delivery, check all items against the packing list. If there is evidence of physical damage or missing items please notify Ampcontrol immediately.

In the case of any discrepancies to the packing list. Keep a record of any claims and correspondence. Photographs are recommended.

Where practicable do not remove protective covers prior to installation unless there are indications of damage. Boxes opened for inspection and inventory should be carefully repacked to ensure protection of the contents or else the parts should be packaged and stored in a safe place. Examine all packing boxes, wrappings and covers for items attached to them, retain and store any approval documentation for your safety file as applicable prior to wrapping being discarded.

### 3.2 Inspection

Equipment that is found to be damaged or has been modified away from its published specification must not be used. Please contact Ampcontrol if the equipment is suspected to be different than that ordered or if it does not match the published specifications.

### 3.3 Storage after Delivery

When the equipment is not to be installed immediately, proper storage is important to ensure protection of equipment and validity of warranty.

All equipment should be stored indoors between 0–40 °C, preferably on shelves and protected from moisture and sunlight.

### 3.4 Unpacking of Equipment

The method of packing used will depend on the size and quantity of the equipment. The following cautions should be interpreted as appropriate.

#### CAUTION!



Take care when unpacking crates as the **contents may have shifted during transport.**

#### ENVIRO



The disposal of packaging materials, replaced parts, or components must comply with environmental restrictions without polluting the soil, air or water.

Ensure that any timber and cardboard used as **packaging is disposed of in a safe and environmentally responsible manner.**

Where possible, dispose of all waste products i.e., oils, metals, plastic and rubber products by using an approved recycling service centre.

## 4 PRODUCT DESCRIPTION

### 4.1 Overview

The Ampcontrol Dongle Programmer is designed to provide the operators the ability to apply configuration files to dongles as needed without the need to custom order a specific dongle. The programmer provides the ability to read, save, load and configure setting configurations.

Ampcontrol dongles provide a storage option for setting configurations used across various products. Although the dongles are standardised in form factor the files stored on them vary. The dongle programmer provides a means of applying the various configuration files to dongles.

### 4.2 Key Features

- Improved integration
- Simplified functionality
- Read / write / store configuration files
- Configure parameter settings for various relays
- Capability for future expansion



Figure 1: Dongle Programmer (180490)

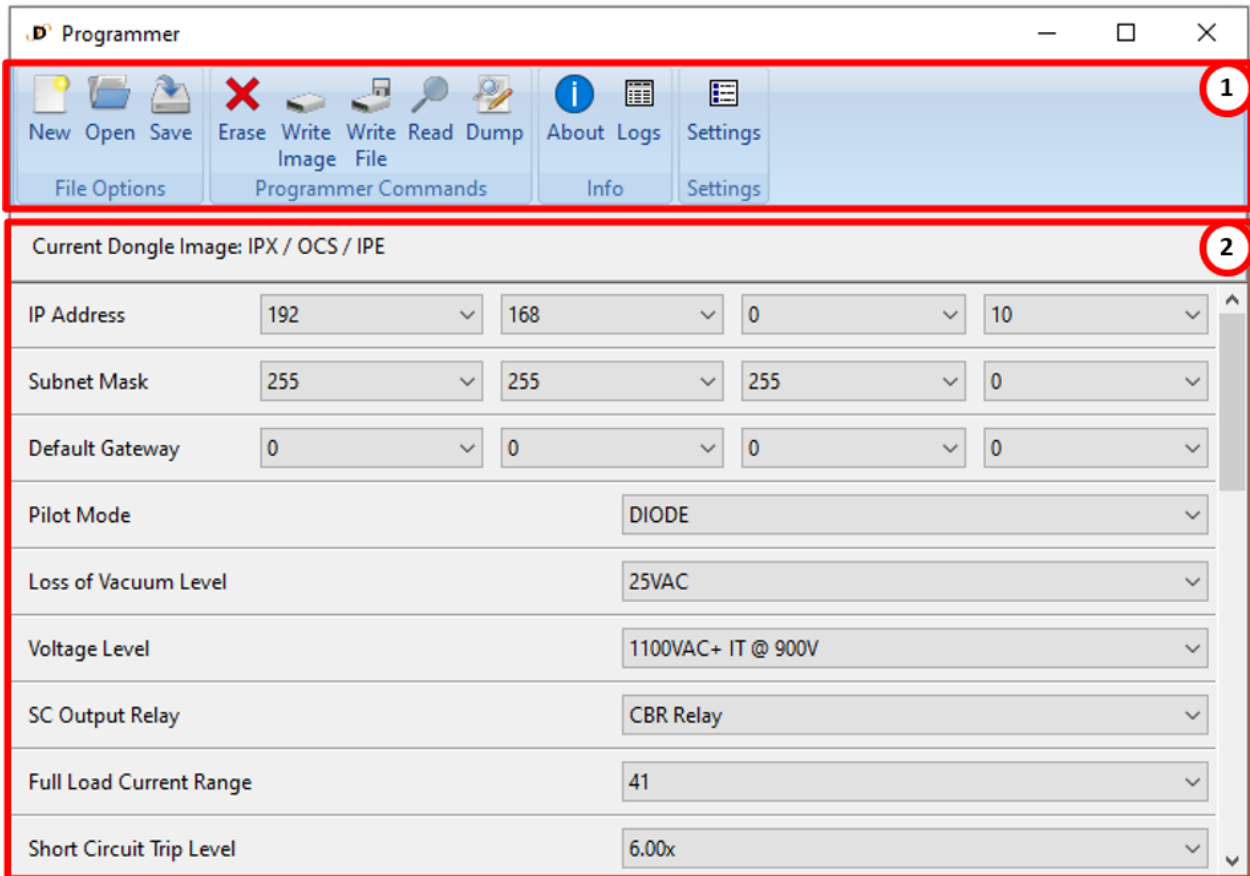


Figure 2: Dongle Blank (179345)

## 5 SOFTWARE

### 5.1 Home Page Overview

The main page of the HMI provides a summary of the selected configuration settings (1) as well as all of the available tools (2).





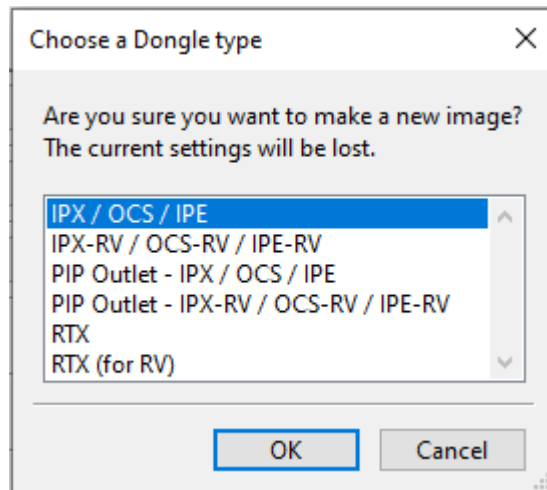
## 5.2 Setting Options

The tool bar provides all of the programming tools required. The functionality of each of these is explained below. When using the software, hovering the mouse above an icon will provide a brief overview of its functionality.



### 5.2.1 File Options (1)

- **New:** generates a new configuration file. When generating a new configuration file, the HMI will ask what product type this is for, so the appropriate settings are displayed.



- **Open:** Opens previously saved configuration file
- **Save:** Saves the configuration displayed in the window

### 5.2.2 Programmer Commands (2)

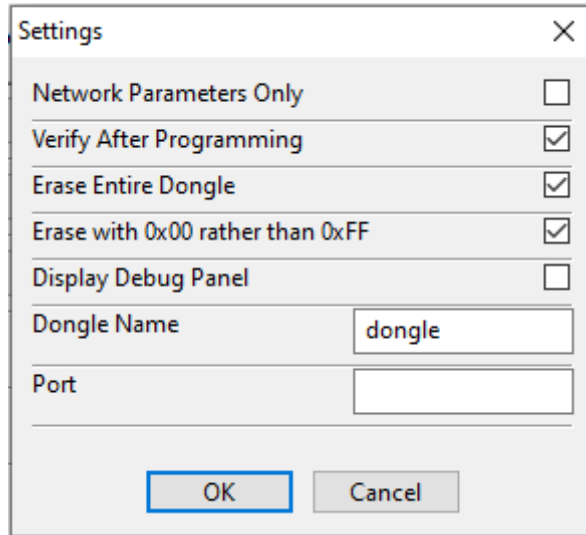
- **Erase:** Will erase the configuration file on the dongle installed within the programmer.
- **Write Image:** Writes the configuration currently open in the window to the dongle.
- **Write File:** Writes a preconfigured configuration file from known location to the dongle.
  - o Default Settings can be chosen using this function
- **Read:** This will read the configuration file of the installed dongle. When reading a configuration file, you will be asked to specify the type of file to allocate settings appropriately.
- **Dump:** Saves the configuration file directly to a file without loading into the viewing window.

### 5.2.3 Info (3)

- **About:** Provides details of the programmer including supported products and version information.
- **Logs:** Provides log files of the programmer utilisation

### 5.2.4 Settings (4)


- **Settings:** Allows the programmer settings to be configured.



## 5.3 Disposal

Please return unwanted units to the Ampcontrol for disposal/recycling.

**ENVIRO**



The electronic equipment discussed in this manual **must not be treated as general waste**. By ensuring that this product is disposed of correctly you will be helping to prevent potentially negative consequences for the environment which could otherwise be caused by incorrect waste handling of this product.

## 6 EQUIPMENT LIST

Part Number	Description
180490	Dongle Programmer
179345	Dongle - Blank

**Find Out More**

For more information on this product, contact Ampcontrol Customer Service on +61 1300 267 373 or [customerservice@ampcontrolgroup.com](mailto:customerservice@ampcontrolgroup.com) or visit the Ampcontrol website: [www.ampcontrolgroup.com](http://www.ampcontrolgroup.com)